



# **Norwich Western Link**

## **Environmental Statement**

### **Chapter 13: Geology and Soils**

#### **Appendix 7: Foxburrow Stream**

#### **Preliminary Contamination**

#### **Assessment**

#### **Sub Appendix A: Site Plans**

Author: WSP

Document Reference: 3.13.07a

Version Number: 00

Date: March 2024



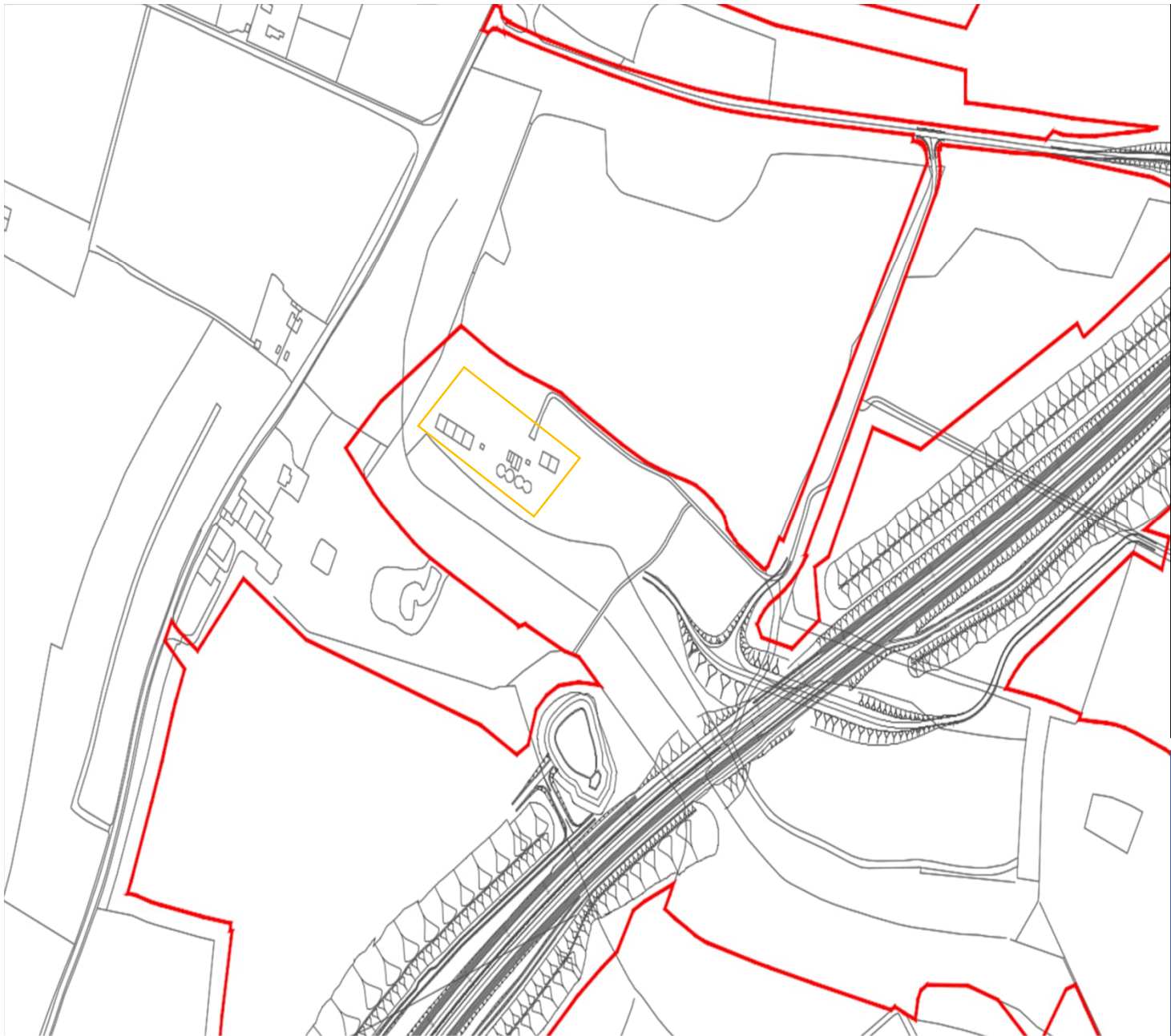
## Contents

1	Introduction .....	3
---	--------------------	---





## **1 Introduction**

- 1.1.1 WSP UK Ltd was commissioned by NCC to complete a interpretative assessment of soil and water samples following hand pitting along the banks of Foxburrow Stream for a proposed Water Framework Directive compensation area. This appendix contains figures and drawings showing the areas relevant to the report.
- 1.1.2 We have included a summary of key information shown in this document in an accessible format in section 1.1.1. However, some users may not be able to access all technical details that are included in the rest of this document. If you require this document in a more accessible format, please contact [norwichwesternlink@norfolk.gov.uk](mailto:norwichwesternlink@norfolk.gov.uk)



Legend

-  Planning Site Boundary
-  Former Sewage Works



TITLE  
Norwich Western Link - Foxburrow  
Plantation Ground Investigation

FIGURE No.  
Appendix 1 - Site Plan